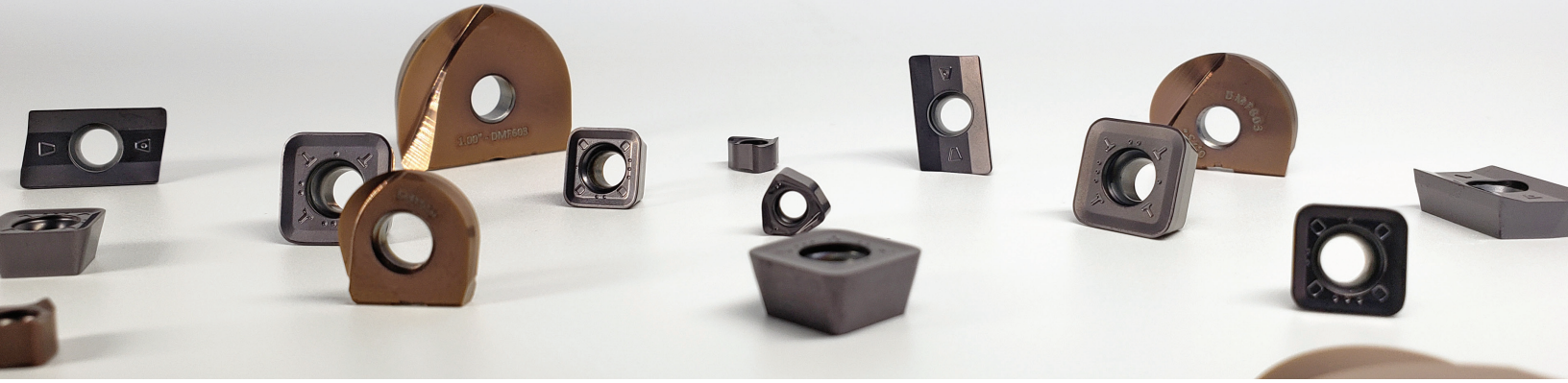




NEW Advanced Insert Grades



Breakthrough milling performance across all materials.

STEEL & CAST IRON

Availability: Square Shoulder (APET), High-Feed, Finishing

These new grades excel in all conditions and hardness levels, combining high hardness and optimized coating surface to achieve at least **30% greater tool life** in P, K and H materials.

DMP920 P10-P35 K10-K30

For general machining of cast iron and steel

- › Tough substrate with high cracking resistance

DMP930 P20-P40 K20-K40

For the toughest steel milling applications

- › Excellent combination of toughness and wear resistance

DMF603 P01-P05 H05-H15

First choice in mold & die finishing applications

- › Recommended for finishing operations in steel and hardened steel

DMF910 P05-P10

For general finishing applications

- › Tougher substrate for greater resistance to chipping and cracking

STAINLESS & HIGH-TEMPS

Availability: High-Feed

Engineered to deliver extreme metal removal under the highest temperatures and harshest conditions, these grades reduce built-up edge with high process reliability.

DMF530 M25-M40 S25-S35

For difficult stainless steels and titanium alloys

- › Optimized coating for both high hardness and unmatched heat resistance

DMH930 M20-M40 S20-S30

For general machining of stainless and titanium

- › Tough fine-grain substrate and ultra-smooth coating resists cracking and built-up edge